



VAS 6179

BRUKSANVISNING · BRUGSANVISNING · KÄYTTÖOHJE · OPERATING INSTRUCTIONS

GEBRAUCHANWEISUNG · MODE D'EMPLOI · GEBRUIKSAANWIJZING

ISTRUZIONI PER L'USO · INSTRUCCIONES DE USO · INSTRUÇÕES DE USO

To avoid functional disturbances, we recommend that you read these instructions thoroughly before using the product.

Technical description (Fig. 1)

Working pressure:	20 MPa (200 bar, 2900 psi) 70 MPa (700 bar, 10150 psi)
Required air pressure:	Fig. 2
Capacity:	Fig. 3
Total oil capacity:	1050 cm ³ (64 in ³)
Effective oil capacity:	1000 cm ³ (61 in ³)
Weight inc. oil:	7,5 kg (16.5 lbs)

Because the pump has a rubber bladder fitted inside the tank it can be used either horizontally or vertically.

Safety feature

The pump is equipped with a safety valve that regulates the output pressure. The safety valve is set to the maximum working pressure at the factory.

Installation

Connecting compressed air

The pump requires a compressed air pressure of at least 0,6 MPa (6 bar, 87 psi) to develop hydraulic pressures of 70 MPa (700 bar, 10150 psi). Make sure that the air pressure does not exceed 1 MPa (10 bar, 145 psi) as this could damage the pump. To ensure efficient operation and long life use clean compressed air with a water trap and oil mist lubrication. Connect the compressed air line using a G 1/4" coupling, as shown in Fig. 1, item A.

Bleeding the hydraulic system

When hoses or tools are connected to the pump they can introduce air into the hydraulic system, which could lead to operating problems. Bleed the system by running the tool or cylinder through 3–4 cycles (by pumping out until fully extended, then releasing) with no load. Make sure that the tool or cylinder is kept lower than the pump to allow the air to flow back into the oil reservoir of the pump. Then hold the pump with the oil reservoir at the top while pressing the pump pedal and release pedal at the same time for around 15 seconds. It may be necessary to top up the oil depending on the volume of air in the connected hoses or tool, see Filling with oil.

System design

When you plan a hydraulic system always choose products that are suitable for the chosen application. Check product limitations with regard to pressure range, lifting capacity and connection options. The maximum working pressure of the system must not exceed the maximum working pressure of any product that is included in the system.

Make sure that all hydraulic hoses, couplings, etc., are connected to the correct connection port (pressure or return connection) on the pump, cylinder, valve or other hydraulic component.

Starting

Hydraulic pressure 20 MPa (200 bar, 2900 psi)

To extend the cylinder or tool, press the pump pedal (Fig. 4, item A). The pump will stop and maintain the achieved hydraulic pressure when the pedal is released in the neutral position.

Hydraulic pressure 70 MPa (700 bar, 10150 psi)

To extend the cylinder or tool, press the pump pedal and the pressure regulating valve simultaneously (Fig. 4, item B). The pump will stop

and maintain the achieved hydraulic pressure when the pedal is released in the neutral position.

Releasing

To release the cylinder or tool, press the release pedal (Fig. 4, item C). Hold the pedal down until the cylinder has moved back to the desired position.

NOTE! Do not overfill when loading rams/tools. Doing so can cause the oil reservoir to burst.

Maintenance

When necessary lubricate moving parts such as the pneumatic piston and valve with high-grade grease.

Service

Filling with oil

Check the oil level before use. Always measure the oil level with the cylinder or tool in the lowest or retracted position. To ensure efficient operation use an hydraulic oil that conforms to ISO VG 10.

- Stand the pump up with the pneumatic motor lowermost (Fig. 5).
- Unscrew the oil filler plug (Fig. 5, item A).
- Fill the oil reservoir through the filler hole until the oil reservoir is completely full (1,050 cm³, 64 in³).
- Screw the oil filler plug back into place.

For safety reasons, service and repair of this product must be done by a knowledgeable person. Upon the slightest doubt, contact your distributor for information about the nearest authorized workshop.

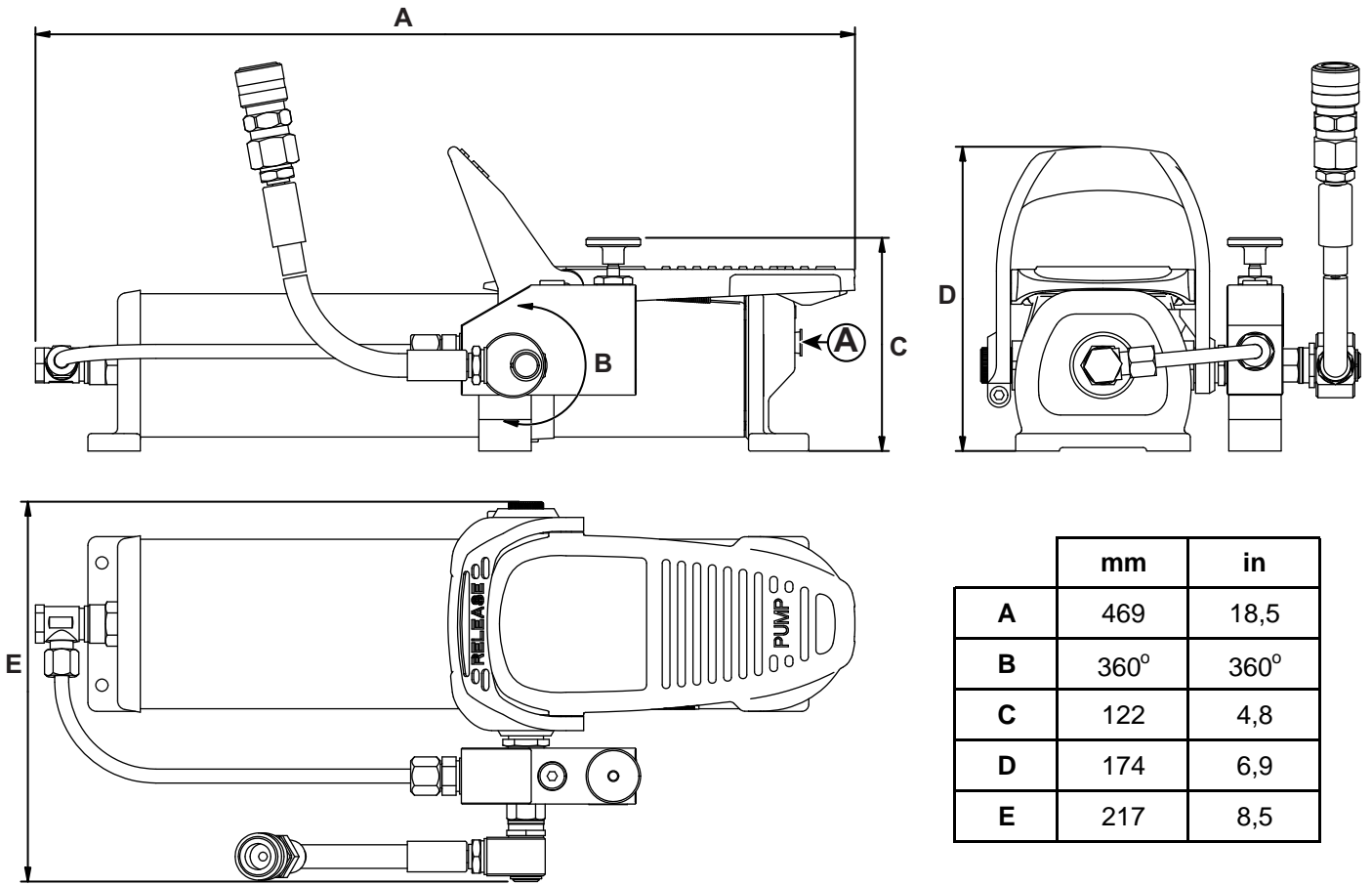


Fig.1

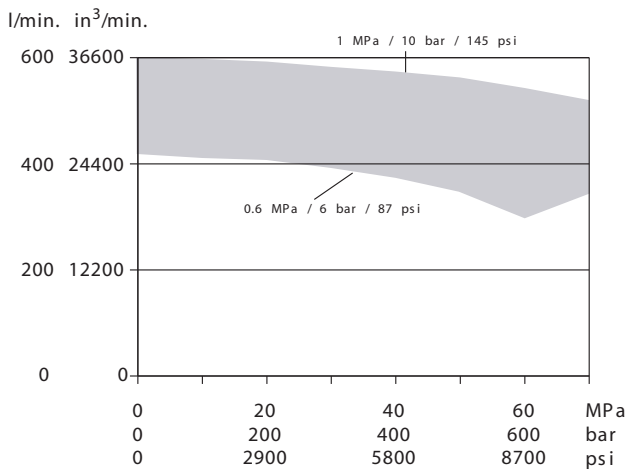


Fig.2

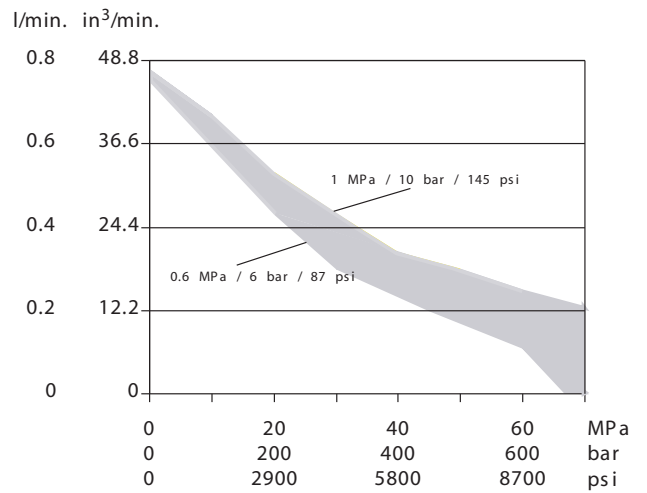


Fig.3

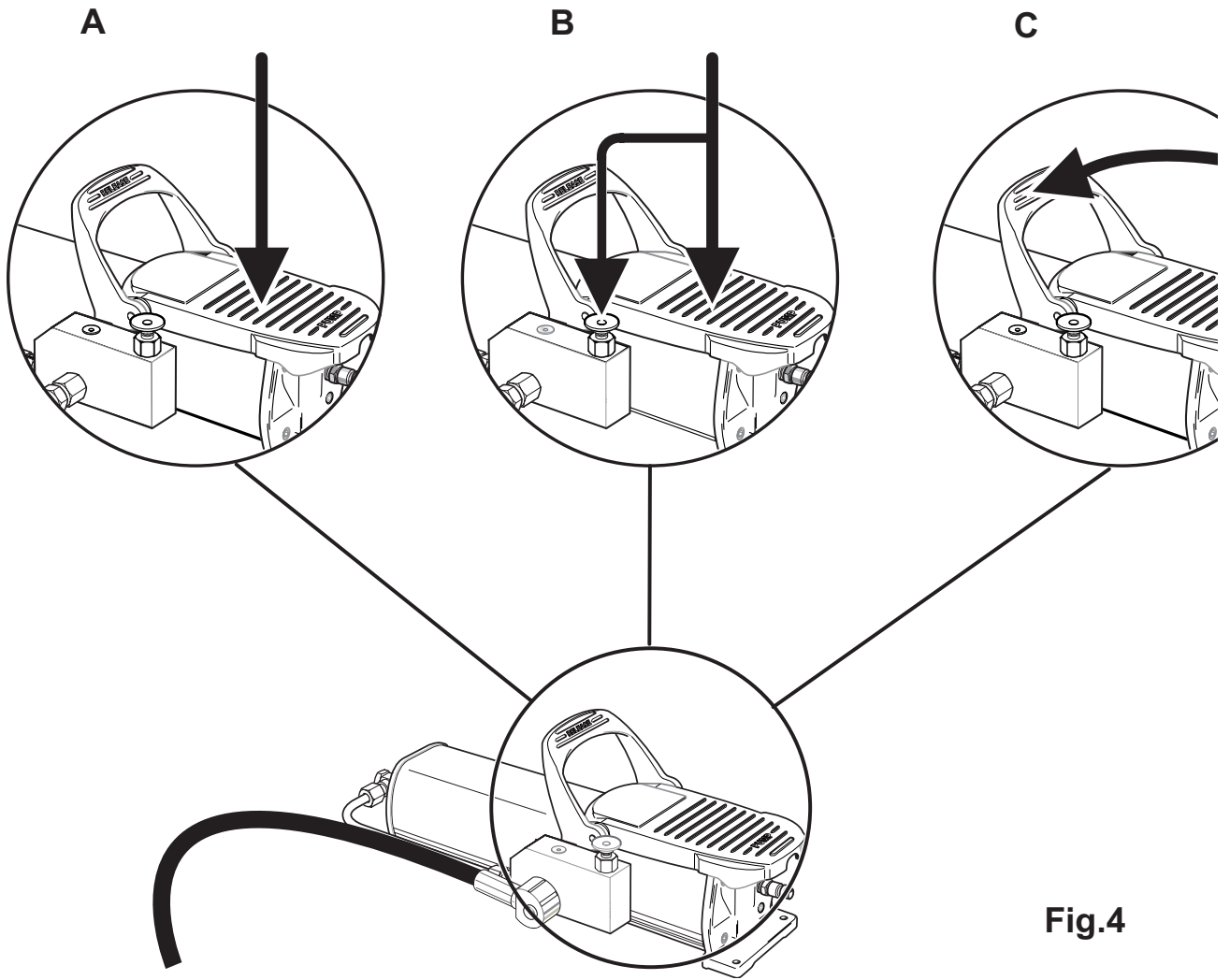


Fig.4

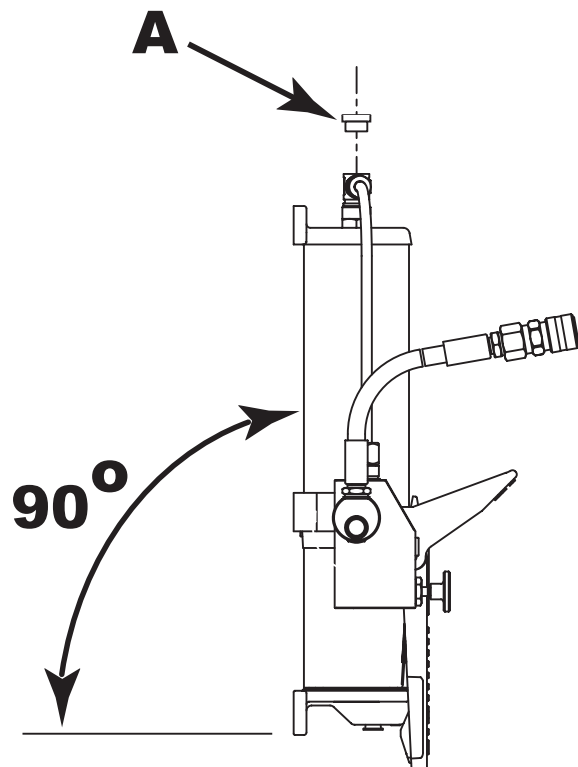
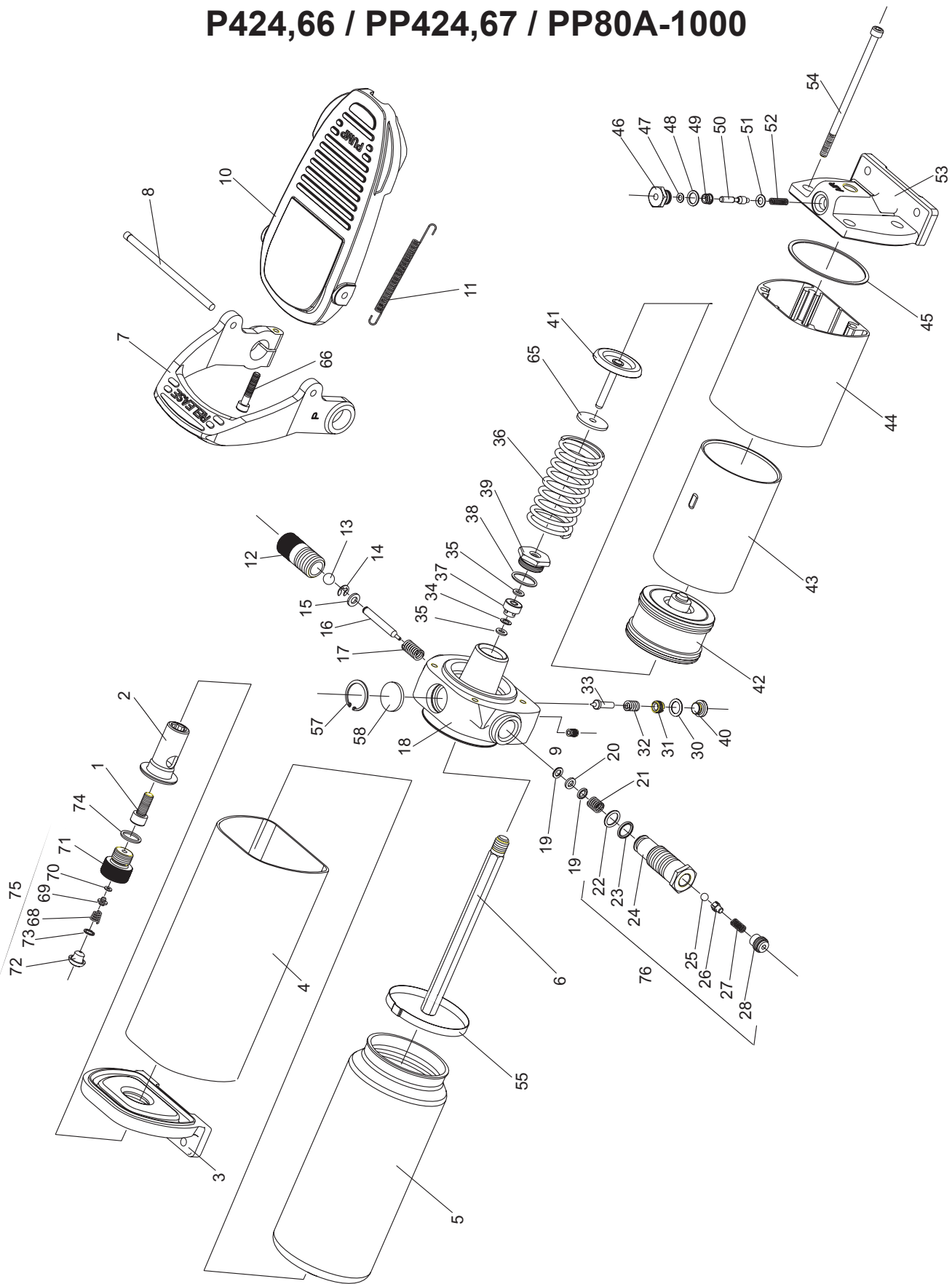


Fig.5

PP63A-1000 / PP70A-1000 P424,66 / PP424,67 / PP80A-1000



PP63A-1000 / PP70A-1000 / PP80A-1000

Ref. No	Qty	Benämning	Description	Bezeichnung	Description	Lagerförd	Ej lagerförd
						Kept in stock Lagergeführt Tenu en stock	Not kept in stock Nicht lagergeführt Ne tenu en stock **
						Part No	Part No
1	1	Skruv	Screw	Schraube	Vis	01001620	
2	1	Hållare	Bracket	Halter	Support	422,41	
3	1	Gavel	End plate	Giebel	Pièce d'arrière	422,36	
4	1	Mantelrör	Tank tube	Mantelrohr	Tube	37234	
5	1	Oljebehållare	Oil container	Öbehälter	Réservoir d'huile	422,45	
6	1	Dragstång	Screw	Schraube	Vis	422,44	
7	1	Avlastningspedal	Release pedal	Entlastungspedal	Pédal de descente	422,33	
8	1	Axel	Axle	Achse	Axe	37238	
9	1	Skruv	Screw	Schraube	Vis	23115	
10	1	Fotpedal	Foot pedal	Fusschalter	Pédal à pied	422,34	
11	2	Fjäder	Spring	Feder	Ressort	37240	
12	1	Avlastningsskruv	Release screw	Entlastungsschraube	Vis de descente	422,32	
13	1	KULA	BALL	KUGEL	BILLE	5640	
14	1	Spårryttare	Track ring	Spurring	Bague	37242	
15	1	Bricka	Washer	Scheibe	Rondelle	01017590	
16	1	Nål	Needle	Nadel	Aiguille	37243	
17	1	Fjäder	Spring	Feder	Ressort	22878	
18	1	Ventilhus PP80A-	Valve housing PP80A-	Ventilgehäuse PP80A-	Corps de pompe PP80A-	424,62	
19	2	Ventilhus PP63/70- Stödring	Valve housing PP63/70- Support ring	Ventilgehäuse PP63/70- Stützring	Corps de pompe PP63/70- Bague de support	422,29 *	01042020
20	1	O-ring	O-ring	O-Ring	Joint	*	17741
21	1	Fjäder	Spring	Feder	Ressort	22877	
22	1	O-ring	O-ring	O-Ring	Joint	*	37245
23	1	Stödring	Support ring	Stützring	Bague de support	*	01042080
24	1	Ventilsäte	Valve cartridge	Ventilsitz	Siège de soupape	37246	
25	1	Kula	Ball	Kugel	Bille	01050060	
26	1	Styrring	Guide	Führung	Canon	25068	
27	1	Fjäder	Spring	Feder	Ressort	15238	
28	1	Skruv	Screw	Schraube	Vis	26402	
29	1	Bricktätning	Packing	Dichtung	Joint	17009	
30	1	O-ring	O-ring	O-Ring	Joint	*	9445
31	1	Skruv	Screw	Schraube	Vis	14143	
32	1	Fjäder	Spring	Feder	Ressort	423,92	
33	1	Nål	Needle	Nadel	Aiguille	17925	
34	1	Stödring PP80-	Support ring PP80-	Stützring PP80-	Bague de support PP80-	*	424,60
35	1	Stödring PP63-/70-	Support ring PP63-/70-	Stützring PP63-/70-	Bague de support PP63-	*	37250
36	2	O-ring PP80-	O-ring PP80-	O-Ring PP80-	Joint PP80-	*	17742
37	2	O-ring PP63-/70-	O-ring PP63-/70-	O-Ring PP63-/70-	Joint PP63-/70-	*	19708
38	1	Fjäder	Spring	Feder	Ressort	19839	
39	1	Bussning PP80-	Bushing PP80-	Buchse PP80-	Bague de palier PP80-	397,52	
40	1	Bussning PP63-/70-	Bushing PP63-/70-	Buchse PP63-/70-	Bague de palier PP63-/70-	26411	
41	1	O-ring	O-ring	O-Ring	Joint	*	20089
42	1	Glander PP80-	Bushing PP80-	Buchse PP80-	Bague de palier PP80-	397,53	
43	1	Glander 63-/70-	Bushing 63-/70-	Buchser 63-/70-	Bague de palier 63-/70-	26410	
44	1	Plugg	Plug	Pfropfen	Bouchon	422,25	
45	1	Kolv PP80-	Piston PP80-	Kolben PP80-	Piston PP80-	33270	
46	1	Kolv PP63-/70-	Piston PP63-/70-	Kolben PP63-/70-	Piston PP63-/70-	32079	
47	1	Kolv	Piston	Kolben	Piston	423,95	
48	1	Cylinderrör	Cylinder tube	Zylinderrohr	Tube de cylindre	422,27	
49	1	Behållare	Container	Behälter	Réservoir	422,28	
45	1	Planpackning	Seal	Dichtung	Joint	*	29212
46	1	Nippel	Nipple	Nippel	Nipple	37253	
47	1	O-ring	O-ring	O-Ring	Joint	*	20890
48	1	O-ring	O-ring	O-Ring	Joint	*	15030
49	1	Bricka	Washer	Scheibe	Rondelle	424,54	

Ref. No	Qty	Benämning	Description	Bezeichnung	Description	Lagerförd	Ej lagerförd
						Kept in stock Lagereführt Tenu en stock	Not kept in stock Nicht lagereführt Ne tenu en stock **
						Part No	Part No
50	1	Ventil	Valve	Ventil	Soupape	37256	
51	1	O-ring	O-ring	O-Ring	Joint	*	422,23
52	1	Fjäder	Spring	Feder	Ressort	20662	
53	1	Luftgavel	Housing	Giebel	Pièce d'arrière	424,55	
54	4	Skruv	Screw	Schraube	Vis	17747	
55	1	Slangklämma	Hose clamp	Schlauchklemme	Crampon de manchon	37258	
57	1	Spärring	Track ring	Spurring	Bague	40181	
58	1	Filter	Filter	Filtre	Filtre	25053	
65	1	Dämpbricka	Damper	Abstandring	Rondelle d'entretoisement	*	404,40
66	1	Skruv	Screw	Schraube	Vis	01001490	
68	1	Fjäder	Spring	Feder	Ressort		422,47
69	1	Styrring	Guide	Stützgriff	Canon		422,48
70	1	O-ring	O-ring	O-Ring	Joint		01040520
71	1	Oljeplugg	Oil plug	Propfen	Bouchon		422,43
72	1	Plugg	Plug	Propfen	Bouchon		20253
73	1	Spärring	Track ring	Spurring	Bague		422,86
74	1	O-ring	O-ring	O-Ring	Joint	*	8100
75	1	Oljeplugg kpl.	Oil plug cpl.	Propfen KPL.	Bouchon cpl.	422,42	
76	1	Ventilsäte kpl.	Valve cartridge cpl.	Ventilsitz KPL.	Siège de soupape cpl.	46510	
		Packningssats	Seal kit	Dichtungssatz	Jeu de joints	424,65	

* Ingår i packningssats Included in Seal kit Im Dichtungssatz enthalten Dans Jeu de joints compris

** Lev. Mot specialorder. Del. On special order. Auf Spezialauftrag geliefert. Angebot verlangen. Livré sur commande speciale. Demandez une offre.

Always use NIKE original spare parts

SE

FÖRSÄKRAN OM ÖVERENSSTÄMMELSE

Vi, NIKE HYDRAULICS AB

adress Björksgatan 8, Box 1107
SE-631 80 ESKILSTUNA, Sverige

försäkrar under eget ansvar att följande produkter, som omfattas av denna försäkran, är i överensstämmelse med villkoren i direktiv 98/37/EC.

NO

ERKLÆRING OM OVERENSSTEMMELSE

Vi, NIKE HYDRAULICS AB

adresse Björksgatan 8, Box 1107
SE-631 80 ESKILSTUNA, Sverige

erklærer på eget ansvar, att følgende produkter, som dekkes av denne erklæringen, er i overensstemmelse med bestemmelsene i direktiv 98/37/EC.

DK

ÖVERENSSTEMMELSESERKLÆRING

Vi, NIKE HYDRAULICS AB

adresse Björksgatan 8, Box 1107
SE-631 80 ESKILSTUNA, Sverige

erklærer på eget ansvar, at følgende produkter, som er omfattet af denne erklæring, er i overensstemmelse med bestemmelserne i direktiv 98/37/EC.

FI

VAATIMUSTENMUKAISUUSVAKUUTUS

Me, NIKE HYDRAULICS AB

osoite Björksgatan 8, Box 1107
SE-631 80 ESKILSTUNA, Ruotsi

vakuutamme yksinomaan omalla vastuullamme, että seuraavat tuotteet, joihin tämä vakuutus liittyy, ovat seuraavien direktiivien vaatimusten mukaisia 98/37/EC.

GB

DECLARATION OF CONFORMITY

We, NIKE HYDRAULICS AB

address Björksgatan 8, Box 1107
SE-631 80 ESKILSTUNA, Sweden

declare under our sole responsibility that the following products to which this declaration relates conform with the provisions of directives 98/37/EC.

DE

ÜBEREINSTIMMUNGSERKLÄRUNG

Wir, NIKE HYDRAULICS AB

Anschrift Björksgatan 8, Box 1107
SE-631 80 ESKILSTUNA, Schweden

erklären auf eigene Verantwortung, dass folgende Produkte, auf die sich diese Erklärung bezieht, mit den Bedingungen der Direktiven 98/37/EC übereinstimmen.

FR

DÉCLARATION DE CONFORMITÉ

Nous, NIKE HYDRAULICS AB

adresse Björksgatan 8, Box 1107
SE-631 80 ESKILSTUNA, Suède

déclarons sous notre seule responsabilité que les produits auxquels se réfère cette déclaration sont conformes aux dispositions des directives 98/37/EC.

NL

VERKLARING VAN OVEREENKOMST

Wij, NIKE HYDRAULICS AB

adres Björksgatan 8, Box 1107
SE-631 80 ESKILSTUNA, Zweden

verklaren geheel onder eigen verantwoordelijkheid dat de volgende producten waarop, deze verklaring betrekking heeft, in overeenstemming zijn met de bepalingen van richtlijn 98/37/EC.

IT

DICHIARAZIONE DI CONFORMITÀ

Noi, NIKE HYDRAULICS AB

indirizzo Björksgatan 8, Box 1107
SE-631 80 ESKILSTUNA, Svezia

dichiariamo sotto la nostra esclusiva responsabilità che i prodotti ai quali questa dichiarazione si riferisce sono conformi a quanto previsto dalle direttive 98/37/EC.

ES

DECLARACIÓN DE CONFORMIDAD

NIKE HYDRAULICS AB

dirección Björksgatan 8, Box 1107
SE-631 80 ESKILSTUNA, Suecia

declaramos bajo nuestra exclusiva responsabilidad la conformidad de los productos a los que refiere esta declaración, con las disposiciones de directiva 98/37/EC.

PT

DECLARAÇÃO DE CONFORMIDADE

Nós, NIKE HYDRAULICS AB

endereço Björksgatan 8, Box 1107
SE-631 80 ESKILSTUNA, Suécia

declaramos, sob nossa única responsabilidade, que os seguintes produtos, incluídos nesta declaração estão em conformidade com o disposto na directiva 98/37/EC.

typ, tyypit, type, type, type, Typ, type, tipo, type, tipo, tipo
PP63A-1000, PP70A-1000, PP80A-1000,
PP100A-1000, PP424,66, PP424,67, PP424,69,
PP432,88, PP445,77, PP70/20A-1000

